



# BUDVABLUE

apartments

[www.budvablue.com](http://www.budvablue.com)





**BUDVABLUE**  
apartments

[www.budvablue.com](http://www.budvablue.com)



# BUDVABLUE

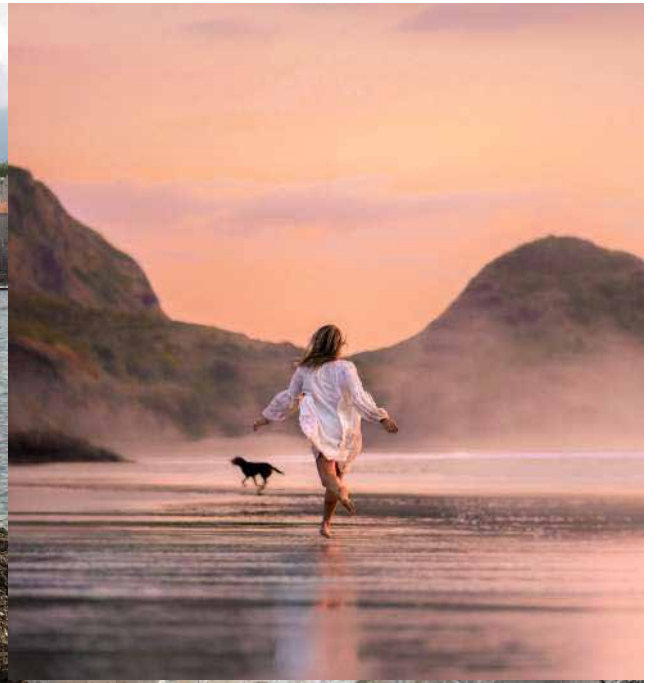
apartments



a new wave of life







# Budva: the city where the sea, nature and history meets

Montenegro's stock as a vacation destination has risen meteorically in recent years, as word-of-mouth of this small country's sensational mix of sun-drenched old towns, sparkling pebble-strewn beaches and beautiful mountains has gotten out, big time.

## Touristic Places in Budva

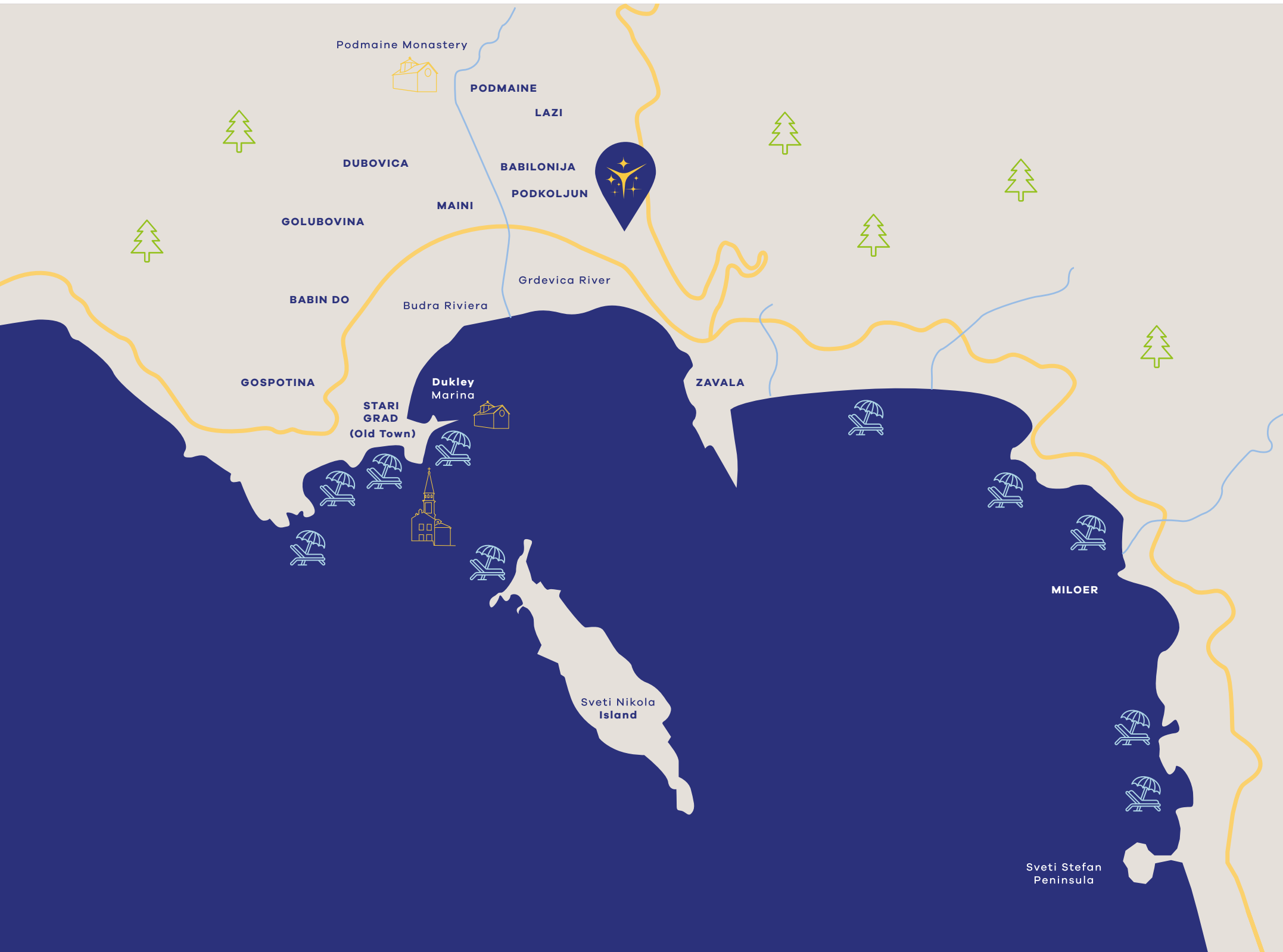
BUDVA RIVIERA BEACH 1 km.  
MORGEN BEACH 3 km.  
AVALA CASINO 3 km.  
DIVING CLUB 3 km.  
STARI GRAD 3 km.  
PLAZA RICARDOVA GLAVA BEACH 3 km.  
BECICI 4 km.  
TOP HILL CLUB 4 km.  
AQUAPARK BUDVA 4 km.  
JAZ BEACH 8 km.  
SVETI STEFAN 9 km.

## Touristic Places in Montenegro

BUDVA: Sveti Stefan 9 km.  
TIVAT: Porto Montenegro 26 km.  
KOTOR: Our Lady of the Rocks Island 38 km.  
BAR: Stari Bar 42 km.  
CETINJE: Njegos Mausoleum 20 km.  
ULCINJ: Old Town 65 km.  
PODGORICA: Skadar Lake 25 km.  
KOLASIN: Kolasin 1600 Ski Center 145 km.  
ZABLJAK: Durmitor National Park  
and Black Lake 185 km.

TIVAT AIRPORT 22 km. / KOTOR 24 km. / PERAST 36 km. / BAR 38 km. / HERCEG NOVI 44 km.  
PODGORICA AIRPORT 70 km. / SHKODRA 85 km. / DUBROVNIK 92 km. / TIRAN 175 km.  
SARAJEVO 286 km. / BELGRADE 534 km. / SOFIA 630 km. / ZAGREB 716 km.





Podmaine Monastery



PODMAINE

LAZI

DUBOVICA

BABILONIJA

MAINI

PODKOLJUN



GOLUBOVINA



Grdevica River

BABIN DO

Budra Riviera

GOSPOTINA

Dukley Marina

ZAVALA

STARI GRAD (Old Town)



MILOER



Sveti Nikola Island



Sveti Stefan Peninsula



  
**BUDVABLUE**  
apartments



  
**BUDVABLUE**  
apartments



# BUDVABL

apartments

'a new wave of living



## BudvaBlue: a luxury apartment life in budva

BudvaBlue has a construction area of 3266 m<sup>2</sup> on a 1597 m<sup>2</sup> land area.

Budvablue has a total of 36 apartments with natural luxury, 16 of which are 2+1 and 20 of which are 1+1.

block A	2+1	8 apartment
block A	1+1	16 apartment
block B	2+1	8 apartment
block B	1+1	4 apartment

# Block A



# Block B



# Playground







Fitness

fitness will always  
keep you fit

Live Budva  
eat.play.love.rest





# Reception



A stylish reception welcomes you at the entrance of BudvaBlue .

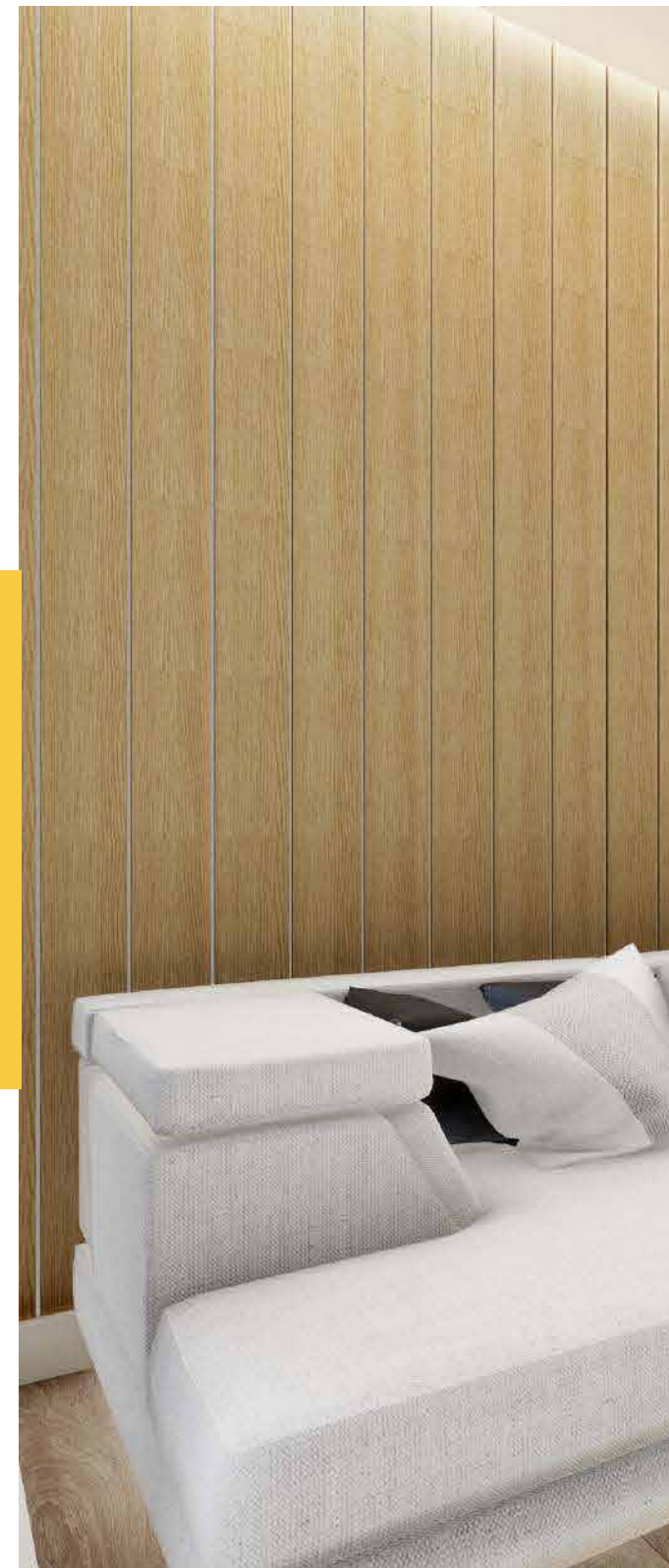
# Business Center



The computer and the internet connection in the Business Center.

BLOCK A  
5 / 11 / 17 / 23

Boho  
Modern  
2+1











BLOCK A  
6 / 12 / 18 / 24

Modern  
Classic  
1+1









# BLOCK A

3 / 4 / 9 / 10 / 15 / 16 / 21 / 22

Bohem  
1+1











# BLOCK B

10 / 11

Boho  
Modern  
3 + 1









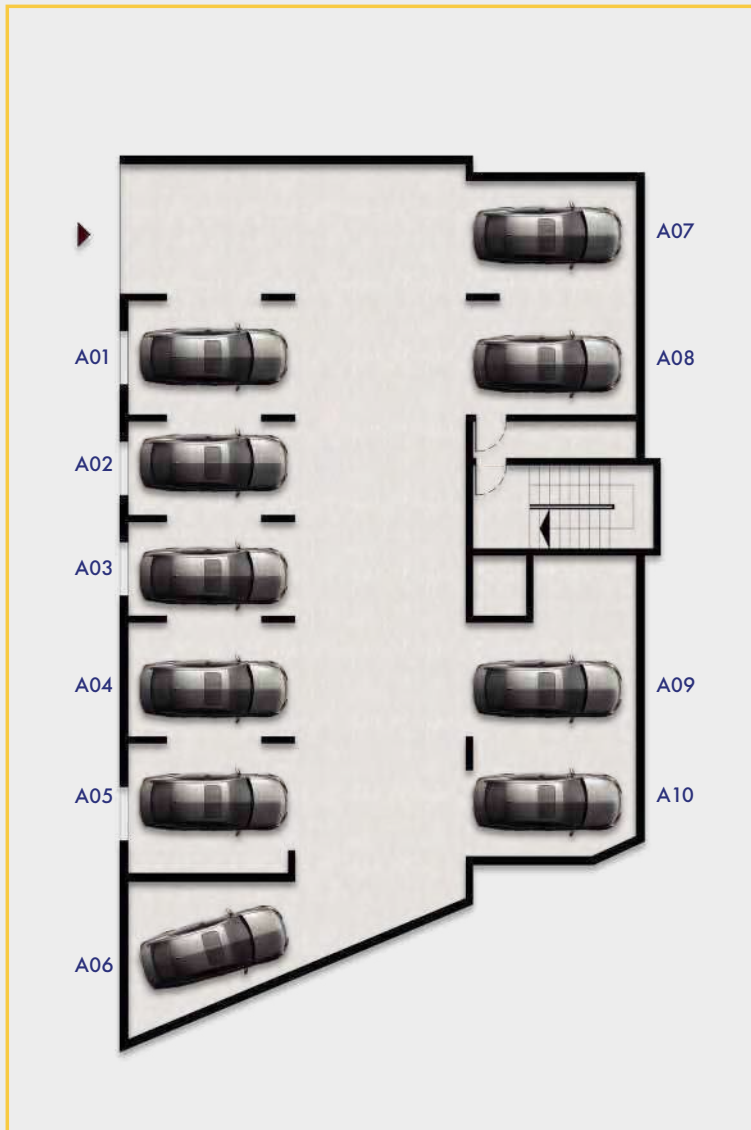
# Car Park



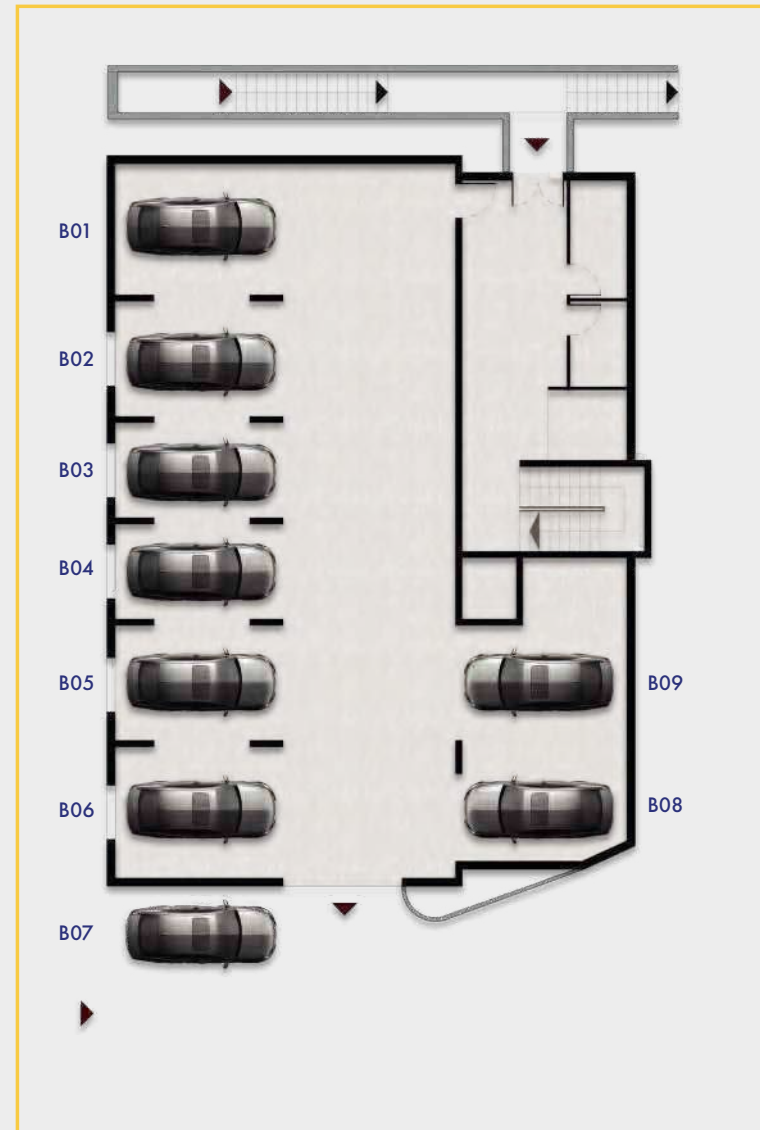


Parking Area for Each Flat and Guests

# GARAGE A

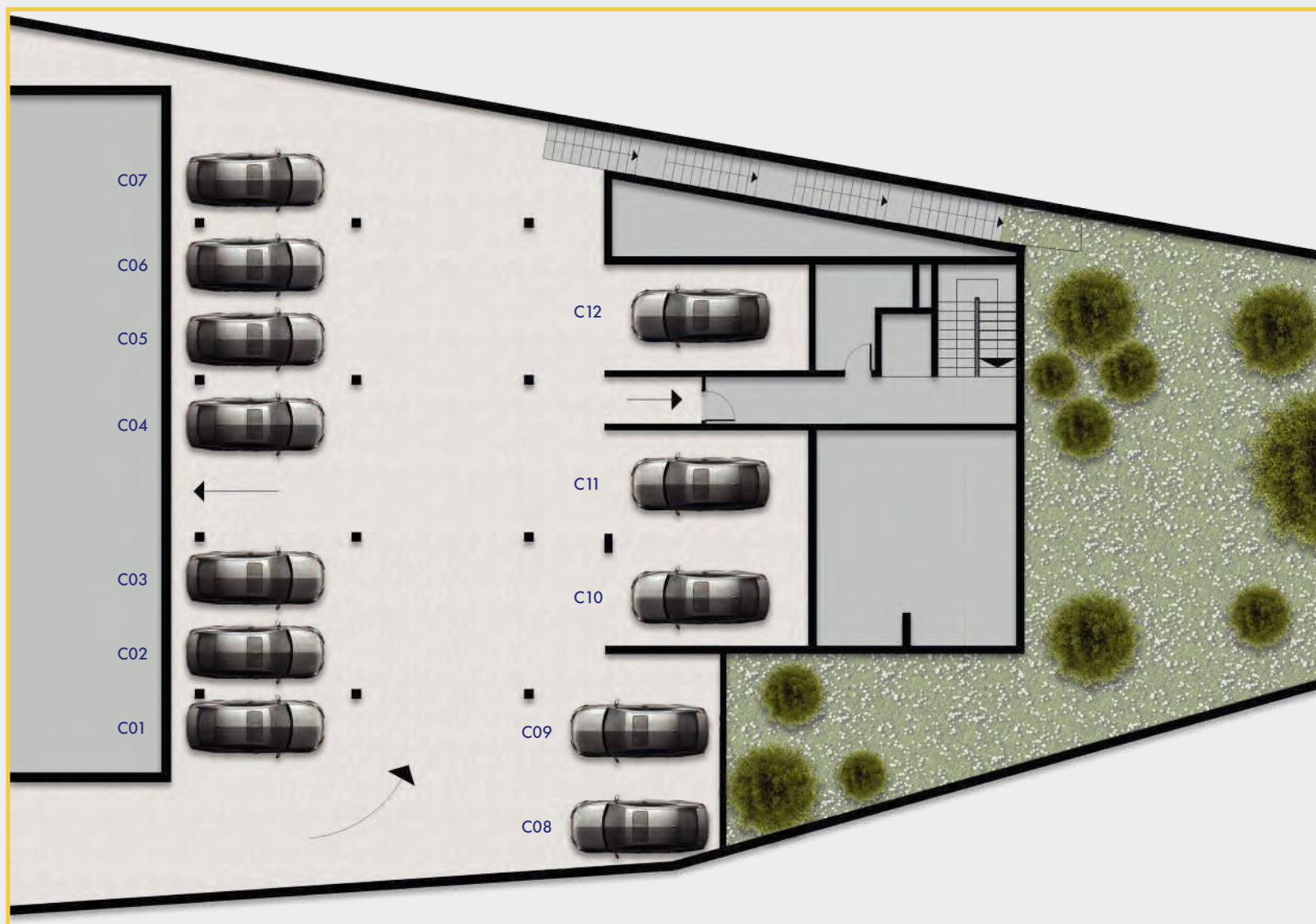


# GARAGE B





# GARAGE C



# A BLOCK



## A1/A7/A13/A19

Entryway	5,59 m <sup>2</sup>
Living Room	16,95 m <sup>2</sup>
Bedroom 1	8,83 m <sup>2</sup>
Bedroom 2	4,70 m <sup>2</sup>
Bathroom	4,45 m <sup>2</sup>

<b>Net Area</b>	<b>39,04 m<sup>2</sup></b>
<b>Gross Area</b>	<b>46,02 m<sup>2</sup></b>

## A2/A8/A14/A20

Entryway	7,16 m <sup>2</sup>
Living Room	16,67 m <sup>2</sup>
Bedroom 1	7,98 m <sup>2</sup>
Bedroom 2	4,48 m <sup>2</sup>
Bathroom	4,33 m <sup>2</sup>
Balcony	4,58 m <sup>2</sup>

<b>Net Area</b>	<b>49,58 m<sup>2</sup></b>
<b>Gross Area</b>	<b>55,31 m<sup>2</sup></b>

## A3/A9/A15/A21

Entryway	5,57 m <sup>2</sup>
Living Room	22,64 m <sup>2</sup>
Bedroom 1	11,83 m <sup>2</sup>
Bathroom	4,94 m <sup>2</sup>
Balcony	12,69 m <sup>2</sup>

<b>Net Area</b>	<b>57,68 m<sup>2</sup></b>
<b>Gross Area</b>	<b>62,48 m<sup>2</sup></b>

## A4/A10/A16/A22

Entryway	5,57 m <sup>2</sup>
Living Room	22,64 m <sup>2</sup>
Bedroom 1	11,83 m <sup>2</sup>
Bathroom	4,94 m <sup>2</sup>
Balcony	12,69 m <sup>2</sup>

<b>Net Area</b>	<b>57,68 m<sup>2</sup></b>
<b>Gross Area</b>	<b>62,48 m<sup>2</sup></b>

## A5/A11/A17/A23

Entryway	6,00 m <sup>2</sup>
Living Room	23,39 m <sup>2</sup>
Bedroom 1	7,98 m <sup>2</sup>
Bedroom 2	4,78 m <sup>2</sup>
Bathroom	4,83 m <sup>2</sup>
Balcony	11,46 m <sup>2</sup>

<b>Net Area</b>	<b>58,44 m<sup>2</sup></b>
<b>Gross Area</b>	<b>65,31 m<sup>2</sup></b>

## A6/A12/A18/A24

Entryway	5,54 m <sup>2</sup>
Living Room	20,25 m <sup>2</sup>
Bedroom 1	9,54 m <sup>2</sup>
Bathroom	4,76 m <sup>2</sup>
Balcony	4,40 m <sup>2</sup>

<b>Net Area</b>	<b>43,57 m<sup>2</sup></b>
<b>Gross Area</b>	<b>50,29 m<sup>2</sup></b>

# B BLOCK



## B1/B4/B7/B10

Entryway	2,80 m <sup>2</sup>
Living Room	18,31 m <sup>2</sup>
Bedroom 1	11,55 m <sup>2</sup>
Bathroom	3,21 m <sup>2</sup>
Balconies	7,51 m <sup>2</sup>
<b>Net Area</b>	<b>43,34 m<sup>2</sup></b>
<b>Gross Area</b>	<b>50,74 m<sup>2</sup></b>

## B2/B5/B8/B11

Entryway	5,56 m <sup>2</sup>
Living Room	16,14 m <sup>2</sup>
Bedroom 1	8,36 m <sup>2</sup>
Bedroom 2	4,72 m <sup>2</sup>
Bathroom	3,75 m <sup>2</sup>
Balconies	9,83 m <sup>2</sup>
<b>Net Area</b>	<b>48,36 m<sup>2</sup></b>
<b>Gross Area</b>	<b>54,19 m<sup>2</sup></b>

## B3/B6/B9/B12

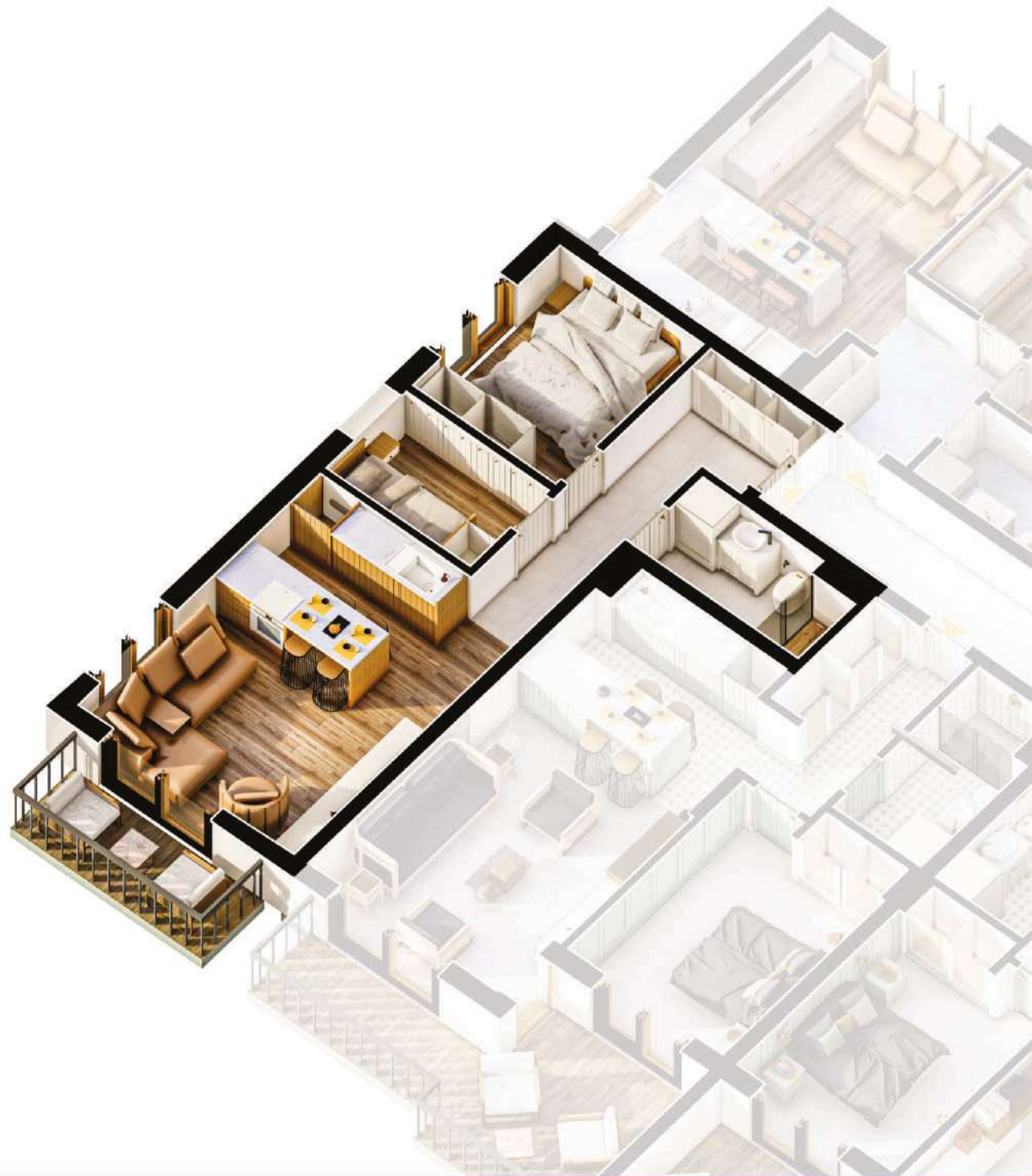
Entryway	5,66 m <sup>2</sup>
Living Room	16,14 m <sup>2</sup>
Bedroom 1	8,51 m <sup>2</sup>
Bedroom 2	4,72 m <sup>2</sup>
Bathroom	4,95 m <sup>2</sup>
Balcony	4,79 m <sup>2</sup>
<b>Net Area</b>	<b>44,77 m<sup>2</sup></b>
<b>Gross Area</b>	<b>50,29 m<sup>2</sup></b>



**2+1 46 m<sup>2</sup>**  
**A1 / A7 / A13 / A19**

1) Entryway	5,59 m <sup>2</sup>
2) Living Room	16,95 m <sup>2</sup>
3) Bedroom 1	8,83 m <sup>2</sup>
4) Bedroom 2	4,70 m <sup>2</sup>
5) Bathroom	4,45 m <sup>2</sup>

<b>Net Area</b>	<b>39,04 m<sup>2</sup></b>
<b>Gross Area</b>	<b>46,02 m<sup>2</sup></b>



**2+1 55 m<sup>2</sup>**  
**A2 / A8 / A14 / A20**

1) Entryway 7,16 m<sup>2</sup>  
 2) Living Room 16,67 m<sup>2</sup>  
 3) Bedroom 1 7,98 m<sup>2</sup>  
 4) Bedroom 2 4,48 m<sup>2</sup>  
 5) Bathroom 4,33 m<sup>2</sup>

6) Balcony 4,58 m<sup>2</sup>  
**Net Area 49,58 m<sup>2</sup>**  
**Gross Area 55,31 m<sup>2</sup>**



**1 + 1 62 m<sup>2</sup>**  
**A3 / A9 / A15 / A21**

1) Entryway	5,57 m <sup>2</sup>
2) Living Room	22,64 m <sup>2</sup>
3) Bedroom	11,83 m <sup>2</sup>
4) Bathroom	4,94 m <sup>2</sup>
5) Balcony	12,69 m <sup>2</sup>

<b>Net Area</b>	<b>57,68 m<sup>2</sup></b>
<b>Gross Area</b>	<b>62,48 m<sup>2</sup></b>



**1 + 1 62 m<sup>2</sup>**  
**A4 / A10 / A16 / A22**

1) Entryway	5,57 m <sup>2</sup>
2) Living Room	22,64 m <sup>2</sup>
3) Bedroom	11,83 m <sup>2</sup>
4) Bathroom	4,94 m <sup>2</sup>
5) Balcony	12,69 m <sup>2</sup>

<b>Net Area</b>	<b>57,68 m<sup>2</sup></b>
<b>Gross Area</b>	<b>62,48 m<sup>2</sup></b>



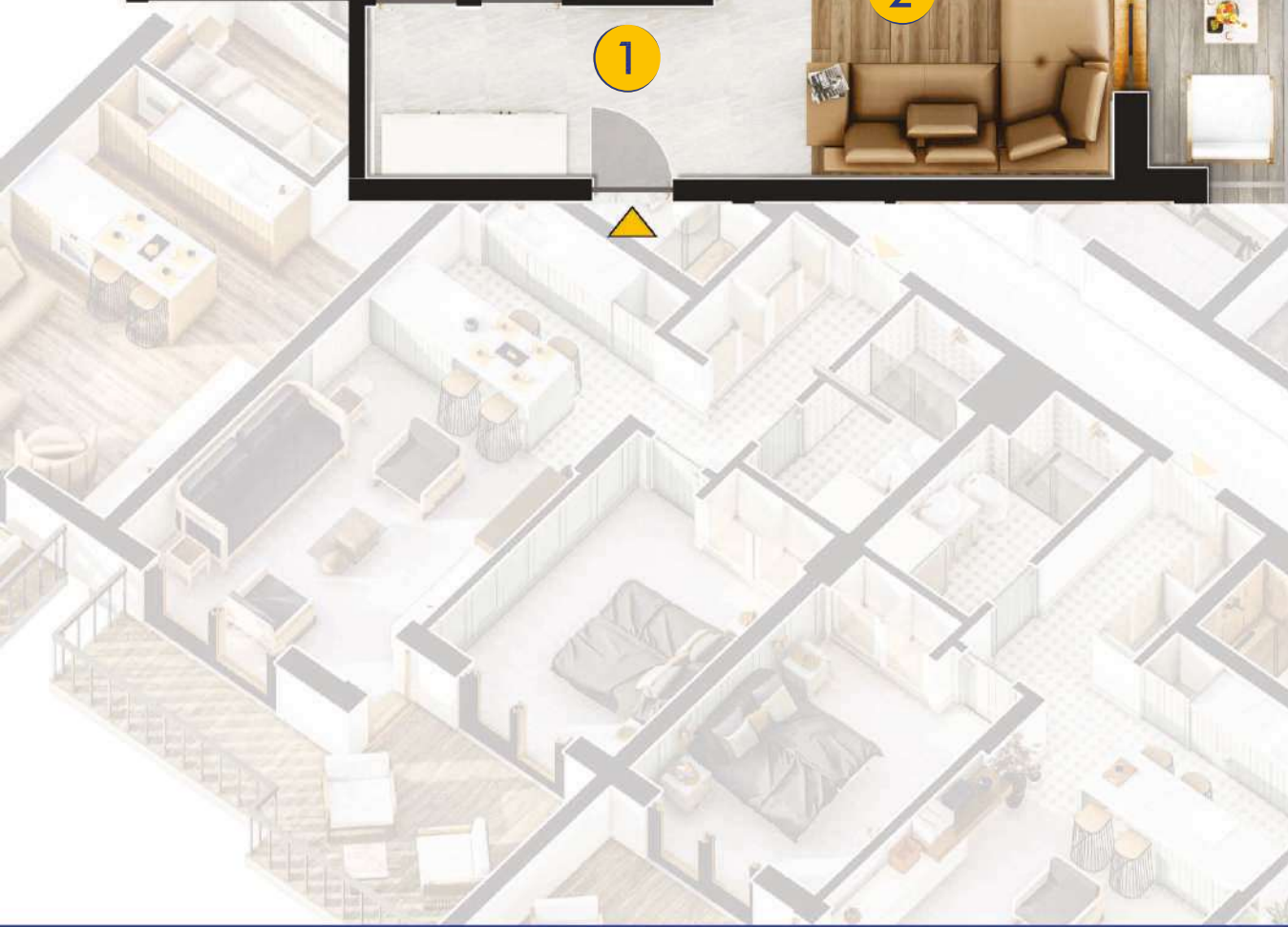
# 2+1 65 m<sup>2</sup>

A5 / A11 / A17 / A23

1) Entryway	6,00 m <sup>2</sup>
2) Living Room	23,39 m <sup>2</sup>
3) Bedroom 1	7,98 m <sup>2</sup>
4) Bedroom 2	4,78 m <sup>2</sup>
5) Bathroom	4,83 m <sup>2</sup>

6) Balcony	5,39 m <sup>2</sup>
7) Balcony	3,51 m <sup>2</sup>
8) Balcony	2,54 m <sup>2</sup>
<b>Net Area</b>	<b>57,49 m<sup>2</sup></b>
<b>Gross Area</b>	<b>65,31 m<sup>2</sup></b>





**1 + 1 50 m<sup>2</sup>**  
**A6 / A12 / A18 / A24**

- 1) Entryway 5,54 m<sup>2</sup>
- 2) Living Room 20,25 m<sup>2</sup>
- 3) Bedroom 9,54 m<sup>2</sup>
- 4) Bathroom 4,76 m<sup>2</sup>
- 5) Balcony 4,40 m<sup>2</sup>

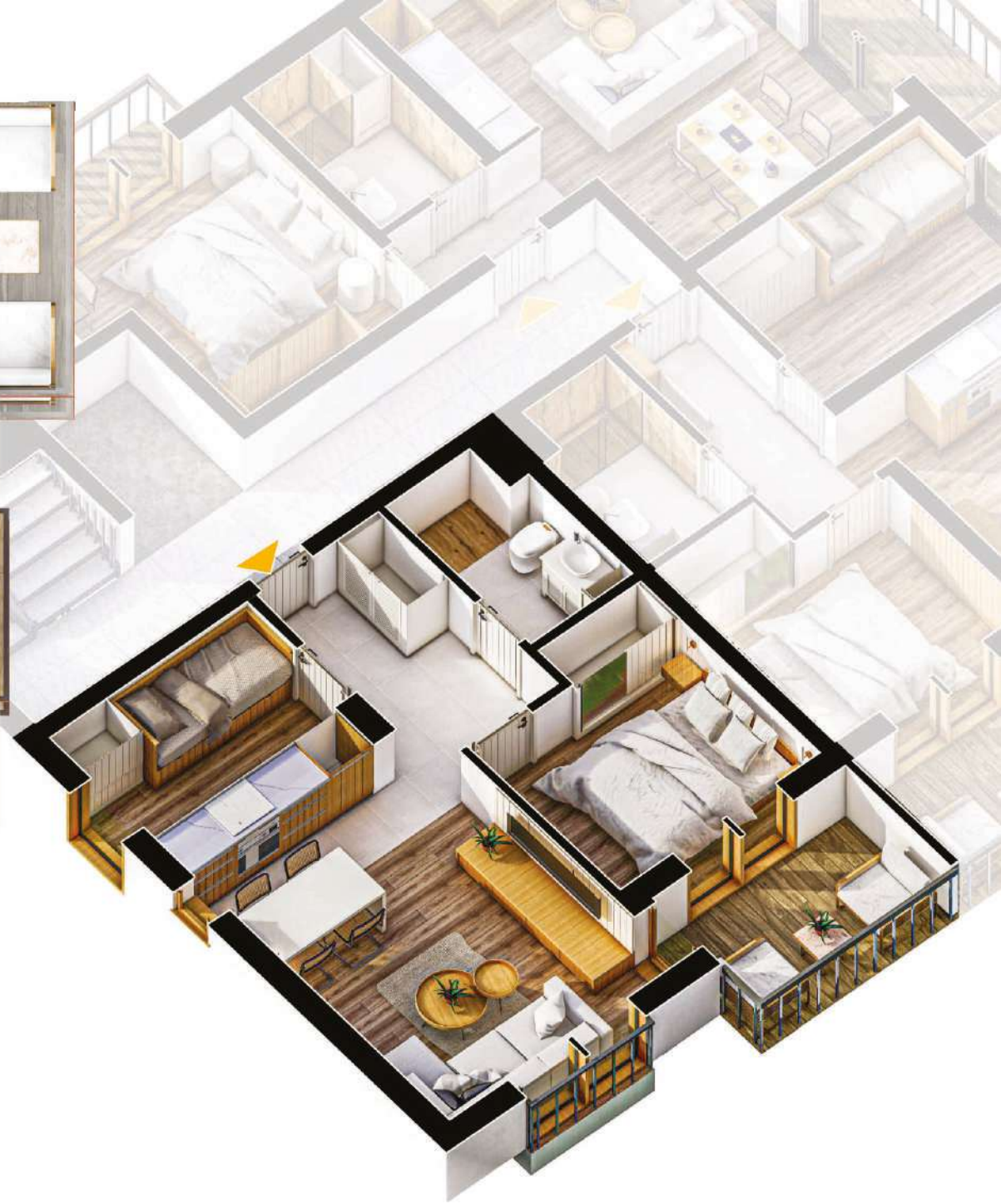
**Net Area 43,57 m<sup>2</sup>**  
**Gross Area 50,29 m<sup>2</sup>**



**1 + 1 50 m<sup>2</sup>**  
**B1 / B4 / B7 / B10**

1) Entryway	2,80 m <sup>2</sup>
2) Living Room	18,31 m <sup>2</sup>
3) Bedroom	11,55 m <sup>2</sup>
4) Bathroom	3,21 m <sup>2</sup>
5) Balcony	2,22 m <sup>2</sup>

6) Balcony	5,29 m <sup>2</sup>
<b>Net Area</b>	<b>43,34 m<sup>2</sup></b>
<b>Gross Area</b>	<b>50,74 m<sup>2</sup></b>



**2+1 54 m<sup>2</sup>**  
**B2 / B5 / B8 / B11**

1) Entryway 5,56 m<sup>2</sup>  
 2) Living Room 16,14 m<sup>2</sup>  
 3) Bedroom 1 8,36 m<sup>2</sup>  
 4) Bedroom 2 4,72 m<sup>2</sup>  
 5) Bathroom 3,75 m<sup>2</sup>

6) Balcony 4,29 m<sup>2</sup>  
 7) Balcony 5,54 m<sup>2</sup>  
**Net Area 48,36 m<sup>2</sup>**  
**Gross Area 54,19 m<sup>2</sup>**



**2+1 51 m<sup>2</sup>**  
**B3 / B6 / B9 / B12**

1) Entryway 5,56 m<sup>2</sup>  
 2) Living Room 16,14 m<sup>2</sup>  
 3) Bedroom 1 8,51 m<sup>2</sup>  
 4) Bedroom 2 4,72 m<sup>2</sup>  
 5) Bathroom 4,95 m<sup>2</sup>

6) Balcony 4,79 m<sup>2</sup>

**Net Area** 42,07 m<sup>2</sup>  
**Gross Area** 50,79 m<sup>2</sup>



## SCHEMATIC SECTION



Fullkon



GARAGE B





Fullkon Group brings its long years of experience in architecture, construction and accommodation to Europe and its rising star, Montenegro. Fullkon Group set out to add value to Montenegro. Fullkon Group is a participation of Emre Group which signed many projects since 1995 in Turkey.

Our mission, with the projects that combine modern architecture with comfort and trust, it is to build structures that respects nature and add value to the people.

[www.fullkongroup.com](http://www.fullkongroup.com)



# EMREGROUP



Emre Group has been built many houses which is a model in modern urbanization in Istanbul. Emre Group produces sustainable projects that are suitable for the texture of the city, sensitive to the environment, protecting the nature. Emre Group has signed many projects that are exemplary in Turkey with its construction and material quality, and also produces architectural projects on an international scale and engages in real estate development activities.

Emre Group provide services with its perspective of  
"safe buildings, happy lives".

[www.emregroup.com.tr](http://www.emregroup.com.tr)



# BUDVABLUE

apartments

## *Sales Offices*



p. +382 67 886 106

Topliski Put BB 85310, Budva, Montenegro.



p. +90 212 320 77 55

m. +90 532 251 61 85

Halil Rifat Paşa Mah. İlhanlı Sk. No: 2, Istanbul, Turkey.

info@fullkongroup.com | www.fullkongroup.com

[www.budvablue.com](http://www.budvablue.com)



The architectural projects in this catalog consist of a design for the building to be built. The manufacturer reserves the right to make changes on the plans in the catalog without prior notice. The details and equipment in the catalog are optional if they are not included in the technical specification, contract annex projects and site list.



**BUDVABLUE**  
apartments

[www.budvablue.com](http://www.budvablue.com)